

**PURIFY UP TO 24 SAMPLES IN LESS THAN 25 MINUTES!**

**VERSATILE**

**TIME SAVING**

**HIGH THROUGHPUT**

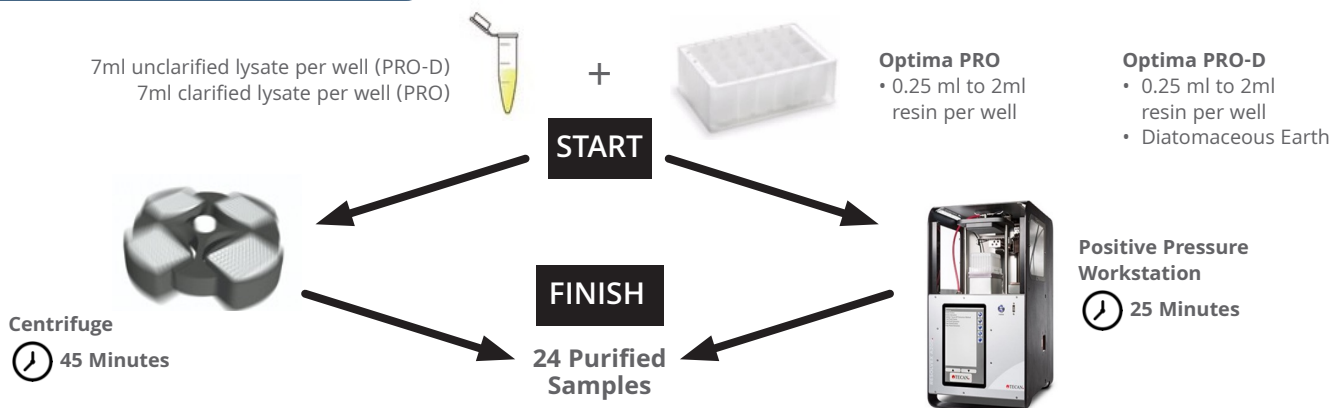
**CUSTOMIZABLE**

### Key Info

- **Versatile** - Can be used in a centrifuge or Positive Pressure Pump System
- **High Throughput** - Purify up to 24 samples simultaneously in 25 minutes
- **Save Time** - Automate with Liquid Handler & Positive Pressure Pump
- **Less Prep Work** - Use unclarified cell lysates with a Diatomaceous Earth Filter Aid (PRO-D)
- **Resins** - Super Protein A, MabSelect™ Sure, MabSelect™ Sure LX
- **Customizable** - Choose from any commercial or in-house affinity resin

### How Does it Work?

From lysate to purified protein faster than ever!



### Key Features & Benefits

Features	Benefits
<ul style="list-style-type: none"> <li>• Pre-packed 24 well plates with 0.25-2ml Protein A resin.</li> <li>• Available with and without diatomaceous earth. The resin hydrates instantly upon sample loading.</li> </ul>	<ul style="list-style-type: none"> <li>• Automation compatible</li> </ul>
<ul style="list-style-type: none"> <li>• Addition of a Diatomaceous Earth Filter Aid allows clog-free loading of unclarified HEK/CHO mammalian or SF9/Hi5 insect cell culture directly onto the resin</li> </ul>	<ul style="list-style-type: none"> <li>• No pre-centrifugation or pre-filtration</li> </ul>
<ul style="list-style-type: none"> <li>• Clog-free</li> <li>• <u>Diatomaceous Earth Filter Aid</u></li> </ul>	<ul style="list-style-type: none"> <li>• Up to 20 x 10<sup>6</sup> cells/ml</li> </ul>
<ul style="list-style-type: none"> <li>• Patent Pending</li> </ul>	<ul style="list-style-type: none"> <li>• Unique technology allows for one-step filtration and purification</li> </ul>

**PURIFY UP TO 24 SAMPLES IN LESS THAN 25 MINUTES!**

VERSATILE

TIME SAVING

HIGH THROUGHPUT

CUSTOMIZABLE

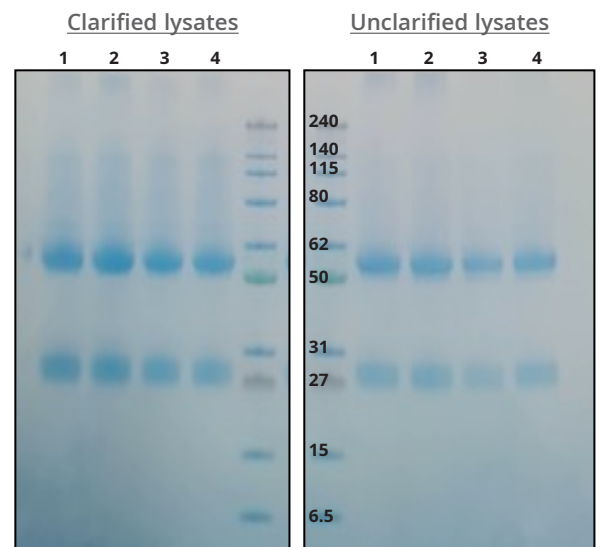
### Why Use It?

Antibody Load (mg)	Average Antibody Yield (mg)	Standard Error	Average % Recovery
20	18.2	+/- 0.27	91
10	8.6	+/- 0.29	86.5
5	4.9	+/- 0.03	99.2
2.5	2.4	+/- 0.07	97.4
1.5	1.5	+/- 0.1	100

Sample: A range of Polyclonal Antibody concentrations spiked into CHO cell media

Optima PRO resin: Super Protein A

Works with unclarified cell lysate!



Sample: Concentrated Hybridoma lysates

Optima PRO resin: Super Protein A

High recovery!

### Ordering Information

Optima PRO Protein A	1 Kit	2 Kits	10 Kits
Optima PRO Protein A (0.2ml)	PAL-0.2ml-24-PA-1	PAL-0.2ml-24-PA-2	PAL-0.2ml-24-PA-10
Optima PRO Protein A (0.4ml)	PAL-0.4ml-24-PA-1	PAL-0.4ml-24-PA-2	PAL-0.4ml-24-PA-10
Optima PRO Protein A (0.6ml)	PAL-0.6ml-24-PA-1	PAL-0.6ml-24-PA-2	PAL-0.6ml-24-PA-10
Optima PRO Protein A (0.8ml)	PAL-0.8ml-24-PA-1	PAL-0.8ml-24-PA-2	PAL-0.8ml-24-PA-10
Optima PRO Protein A (1ml)	PAL-1ml-24-PA-1	PAL-1ml-24-PA-2	PAL-1ml-24-PA-10
Optima PRO Protein A (1.5ml)	PAL-1.5ml-24-PA-1	PAL-1.5ml-24-PA-2	PAL-1.5ml-24-PA-10
Optima PRO Protein A (2ml)	PAL-2ml-24-PA-1	PAL-2ml-24-PA-2	PAL-2ml-24-PA-10
Optima Custom pre-packed	PAL-HT-24-CUST-1	PAL-HT-24-CUST-2	PAL-HT-24-CUST-10



# Fact Sheet

## Optima PRO A 24 Well Plate High Throughput Protein Purification

**PURIFY UP TO 24 SAMPLES IN LESS THAN 25 MINUTES!**

VERSATILE

TIME SAVING

HIGH THROUGHPUT

CUSTOMIZABLE

### Plate Specifications

Dried resin volume	0.2ml - 2ml
Recommended sample volume per load	2-7 ml
Recommended elution volume	2x 300 µl
Max well volume	8 ml
Max sample volume per load	8 ml
Min sample volume	2 ml
Min elution volume	300 µl
Matrix	6% cross-linked Agarose
Resin mean bead size	90 µm
Cell Density HEK Expi 293	2.5 x 10 <sup>6</sup> /ml - 20.0 x 10 <sup>6</sup> /ml
Typical binding capacity per well • Protein A	Resin dependent Up to 22mg of antibody
Positive pressure	Compatible
Recommended positive pressure • Optima PRO 24-well • Optima PRO-D 24-well	• 30% pressure for 60 sec (all steps) • 60% pressure for 90 sec (loading); 30% pressure for 60 sec (wash and elution)
Recommended centrifuge speed	300 g for 2-5 mins
Recommended shaker speed (2 mm orbit)	400 rpm
Maximum shaker speed (2 mm orbit)	400-500 rpm
Membrane material	PES
Empty plate resistant to the following reagents	< 8 M urea, < 6M GuHCl, < 20 mM DTT, DTE, 2-ME, <50% glycerol, < 20% ethanol, <2% non-ionic detergents e.g, Tween, Triton
Chemical compatibility	All cell lysis/protein purification buffers
2-D barcode	Yes
Shipping temperature	Ambient
Storage	2 - 8°C (pre-packed plate)