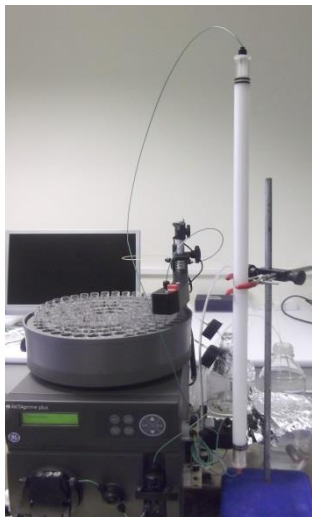


## ProteoSEC Size Exclusion Columns



Protein Ark's ProteoSEC Size Exclusion Columns (SEC) utilize a high performance rigid resin derived from a co-polymer of Dextran and Agarose. We offer 2 different column sizes: 16/60 and 26/60 columns with Superdex™ S75 pg and Superdex™ S200 pg behaviour. Our '6-600' HR acrylic columns have a protein separation range within 6kDa to 600 kDa and the '3-70' HR acrylic columns have a protein separation range within 3kDa to 70 kDa.



Both these HR acrylic columns are ideal for high definition preparative protein polishing steps using all aqueous buffers, at room temperature and in the cold room.

### Features:

- High resolution (HR) preparative grade columns with comparable performance to GE Healthcare Superdex™ 200 pg (6-600 HR) and Superdex™ 75 pg (3-70 HR) SEC columns.
- The 6-600 HR column has a separation range of 6-600 kDa. The 3-70 HR column has a separation range of 3-70 kDa.
- Each column is certified for Height Equivalent to a Theoretical Plate (HETP) and peak asymmetry: Theoretical Plate Number: > 10,000 N/m & Peak Asymmetry: 0.7-1.5.
- Two different column sizes: 16/60 & 26/60 available with 3-70 HR resin or 6-600 HR resin.
- Both High Resolution (HR) resins are co-polymers of dextran and agarose and have a mean particle size of ca. 35 µm (20-50 µm).

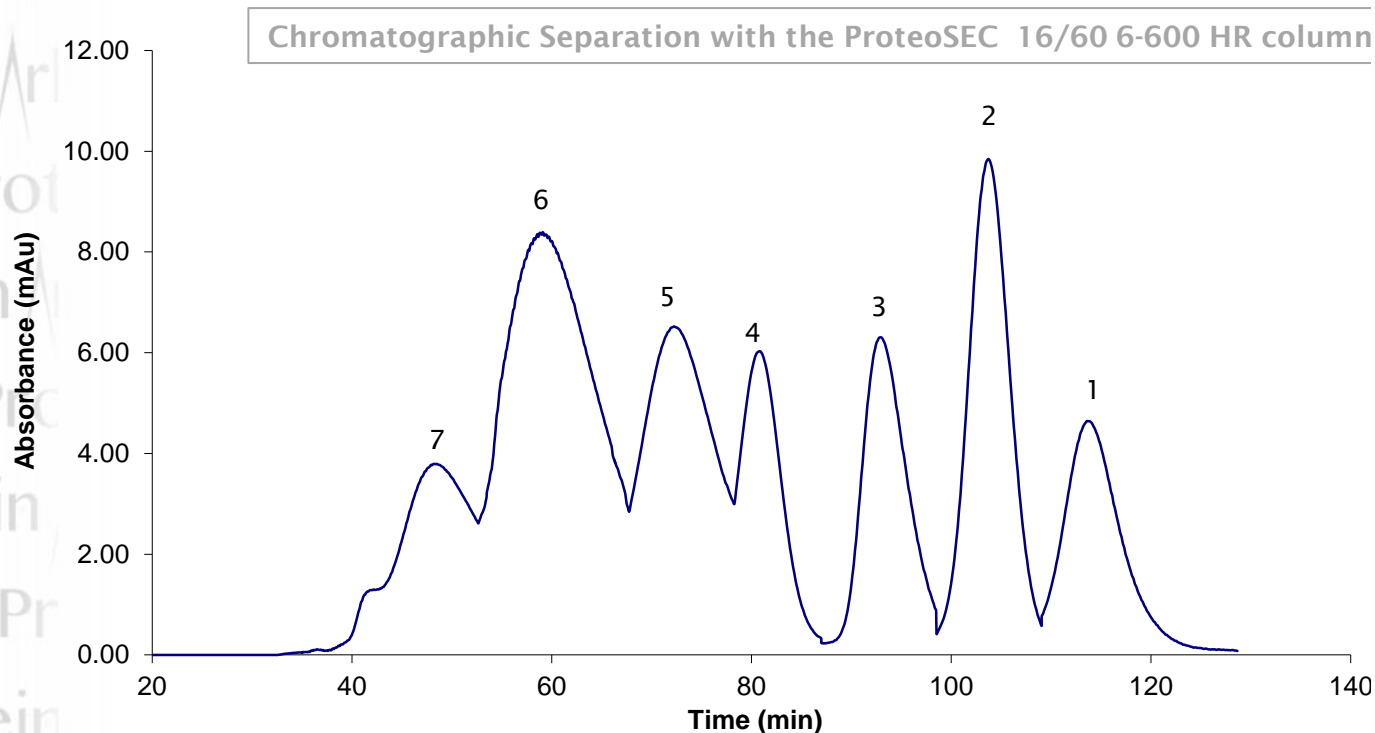
### Column Sizes:



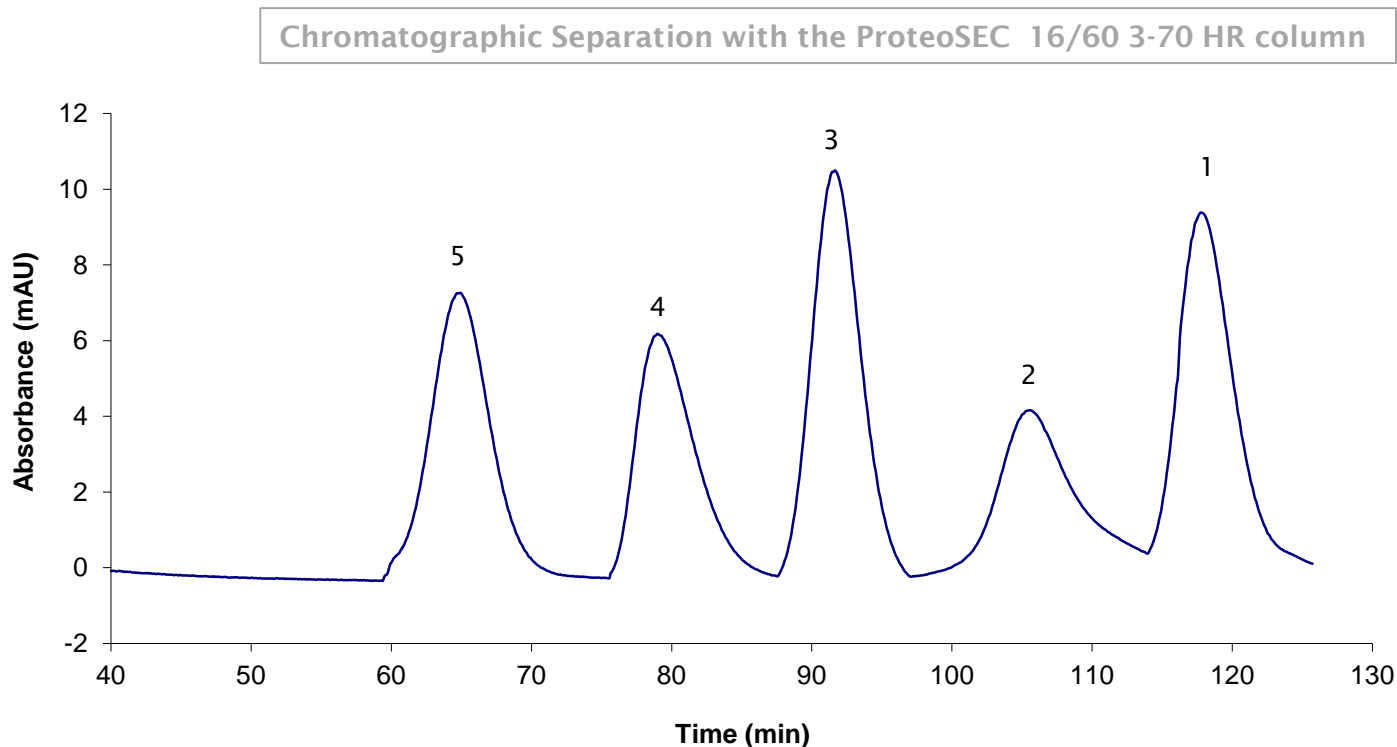
ProteoSEC 16/60 column

Internal Diameter (mm)	Column Length (cm)	Column Volume (ml)	Max Sample Volume (ml)* protein-dependent	Connections	Max Pressure
16 mm	60 cm	120 ml	1-5 ml	10.32 UNF/Female Inlet and Outlet for AKTA or other systems	<b>3-70 Columns</b> Column Max 6 Bar Resin Max 4 Bar
26 mm	60 cm	320 ml	3-10 ml		<b>6-600 Columns</b> Column Max 5 Bar Resin Max 3 Bar

**Fractionation Performance Data:** Separation of test substances on a 16/600 gel filtration column packed with 6-600 HR SEC resin. Flowrate: 1 ml/min (30 cm/hr); sample loading: 0.5 ml; mobile phase: PBS (phosphate buffered saline); Model proteins 1: Aprotinin ( $M_r$  6,500); 2: Cytochrome c ( $M_r$  12,300); 3:  $\beta$ -lactoglobulin ( $M_r$  35,000); 4: BSA ( $M_r$  67,000); 5:  $\gamma$ -globulin IgG ( $M_r$  158,000); 6: Apoferritin ( $M_r$  440,000); 7: Thyroglobulin ( $M_r$  669,000),



**Fractionation Performance Data:** Separation of test substances on a 16/600 gel filtration column packed with 3-70 HR SEC resin. Flowrate: 1 ml/min (30 cm/hr); sample loading: 0.5 ml; mobile phase: PBS (phosphate buffered saline); Model proteins 1: Vit B-12 ( $M_r$  1,200); 2: Aprotinin ( $M_r$  6,500); 3: Cytochrome c ( $M_r$  12,300); 4:  $\beta$ -lactoglobulin ( $M_r$  35,000); 5: BSA ( $M_r$  67,000).



## Ordering Information:

Product Name	Product Description	Units	Order Code
ProteoSEC 16/60 3-70 HR SEC Column	ProteoSEC SEC column (16 mm ID; 60 cm length, 3-70 kDa HR resin) 120 ml bed volume for max 1-5 ml sample volume	1	SEC-16/60-3-70
ProteoSEC 26/60 3-70 HR SEC Column	ProteoSEC SEC column (26 mm ID; 60 cm length, 3-70 kDa HR resin) 320 ml bed volume for max 3-10 ml sample volume	1	SEC-26/60-3-70
ProteoSEC 16/60 6-600 HR SEC Column	ProteoSEC SEC column (16 mm ID; 60 cm length, 6-600 kDa HR resin) 120 ml bed volume for max 1-5 ml sample volume	1	SEC-16/60-6-600
ProteoSEC 26/60 6-600 HR SEC Column	ProteoSEC SEC column (26 mm ID; 60 cm length, 6-600 kDa HR resin) 320 ml bed volume for max 3-10 ml sample volume	1	SEC-26/60-6-600

Calibre Scientific UK  
 Unit 5A, R-Evolution  
 The Advanced Manufacturing Park  
 Selden Way, Rotherham, S60 5XA  
 Telephone: +44 (0) 114 224 2257  
 Email: [info@proteinark.com](mailto:info@proteinark.com)