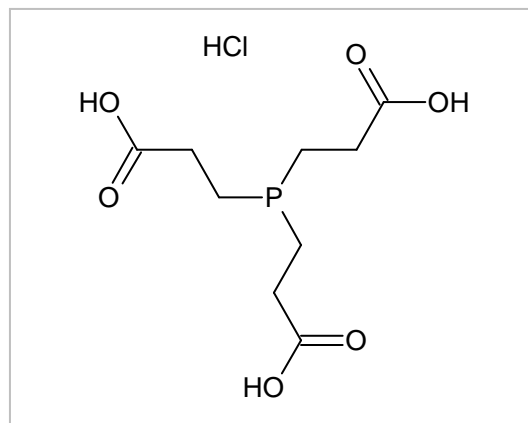


## TCEP Datasheet

TCEP (Tris(2-carboxyethyl)phosphine hydrochloride) is an effective reducing agent for cleaving protein disulphide bonds in aqueous solution. It is soluble in water, odourless and non-toxic. It offers considerable advantages over 2-mercaptoethanol or DTT during Ni-IMAC chromatography.



### Specification:

Formula:	$C_9H_{15}O_6P \cdot HCl$
Molecular Weight:	286.65 g/mol
CAS:	[51805-45-9]
Purity:	98.0% min. (GC)
Appearance:	White powder
IR:	Conforms to structure
Water content:	0.5% max. (KF)
Solubility:	Clear to slightly hazy (50 mg/ml in water)
Storage:	Room temperature
Usage:	TCEP is acidic when dissolved in water with a pH of approximately 2.5. Adjust the pH of the solution with the appropriate working buffer just before use.

### Ordering Information:

Product	Units	Order Code
TCEP	1 g	GEN-TCEP-1
TCEP	10 g	GEN-TCEP-10

### Protein Ark Limited

Telephone +44 (0) 33 33 44 20 25  
 FAX: +44 (0) 33 33 44 20 25  
 Email: [info@proteinark.com](mailto:info@proteinark.com)